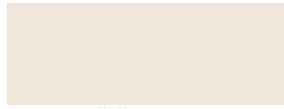


PHENOLIC COLOR CHART

STANDARD COLORS



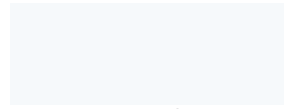
D92 - Dove Grey



D439 - Wallaby



10657 - Graphite



D354 - Designer White



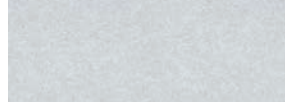
D25 - Atlantis



D307 - Hollyberry



D14 - Port



4856 - Cloud Zephyr



D379 - Indigo



D427 - Linen



D91 - Slate Grey



D90 - North Sea



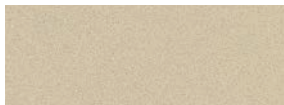
1595 - Black



4142 - Grey Glace



4623 - Graphite Nebula



4143 - Neutral Glace



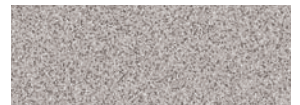
4651 - Navy Legacy



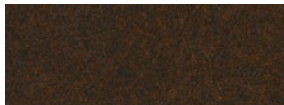
4796 - Burnished Chestnut



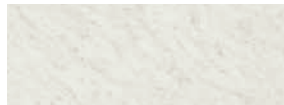
4667 - Green Tigris



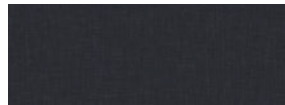
4622 - Grey Nebula



4846 - Morro Zephyr



4924 - White Carrara



5023 - Nightfall



4746 - Woolamai Brush



5013 - Mushroom



4995 - Forged Steel



4630 - Cloud Nebula



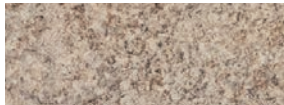
D417 - Lapis Blue



D503 - Cement



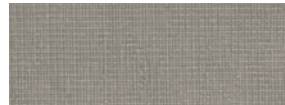
4830 - Satin Stainless



4929 - Bordeaux Juparana



D79 - Hunter Green

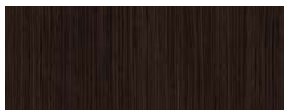


4878 - Pewter Mesh

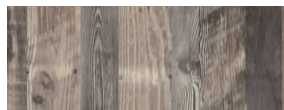


15063 - Grey Keep

PREMIUM COLORS



7997 - Ebony Recon



8216 - Antique Marula Pine



4996 - High Rise



8214 - Phantom Charcoal



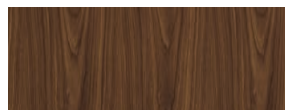
4939 - Vapor Strandz



8200 - White Driftwood



7924 - Biltmore Cherry



7110 - Montana Walnut



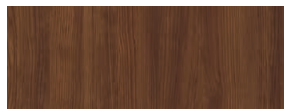
7925 - Monticello Maple



7909 - Fusion Maple



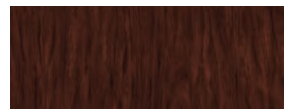
7054 - Wild Cherry



7994 - Lowell Ash



7922 - Brighton Walnut



7040 - Figured Mahogany



7953 - Harvest Maple



7919 - Amber Cherry



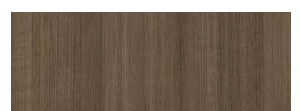
7816 - Solar Oak



7935 - Shaker Cherry



7957 - Zanzibar



7960 - Studio Teak

**Actual colors may vary slightly from those shown due to limitations in the printing process.*



COLUMBIA SYSTEMS INTERNATIONAL
OF SOUTH CAROLINA



ADDRESS

9031 Farrow Rd.
Columbia, SC 29203



PHONE

866.337.7286



WEBSITE

www.PSiSC.com



PHENOLIC COLOR CHART

"The World's Most Durable Material for Lockers & Toilet Partitions"

Phenolic material is a long-lasting durable option, with benefits including a resistance to moisture, graffiti, wear, scratch, chemical, or corrosion damage. Phenolic is a low maintenance and highly durable option for high-traffic areas.



COLUMBIA PARTITIONS **COLUMBIA LOCKERS**

MANUFACTURED BY PSiSC® ©2024